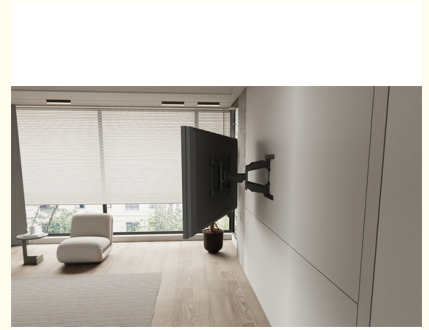


99Lbs TV Wall Mount 400x600mm TV Wall Brackets For 40 To 86 Inches LCD TVs

Our Product Introduction

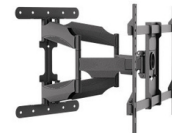
Basic Information

- Place of Origin: China
- Brand Name: ENJOY or Yours
- Certification: CE RoHS FCC
- Model Number: YG series
- Minimum Order Quantity: 1pcs
- Price: 36-78USD/PCS
- Packaging Details: Carton
- Delivery Time: 3-20days
- Payment Terms: L/C, T/T, Western Union, MoneyGram
- Supply Ability: 100000pcs/month



Product Specification

- Product Name: TV Wall Mount
- Model: YG80
- Color: Black
- Weight Capacity: 99Lbs
- VESA Size: 200x200 To 400x600mm
- Material: Steel
- Size: Fits Most 40-86 Inch TVs
- Tilt: $\pm 5^\circ$
- Highlight: **99Lbs TV Wall Mount, TV Wall Mount 400x600mm, tv wall brackets for 40in**



Product Description

Product Description:

Large Heavy Duty, Cable Management TV Wall Mount for 40 to 86 inches LCD TVs

Our Heavy Duty TV Wall Mount is crafted with robust materials and reinforced construction, capable of effortlessly supporting even the largest and heaviest of LCD TVs. Rest assured, your valuable investment is securely held in place, providing peace of mind for years to come. With our Large Heavy Duty TV Wall Mount, size is never an issue. Whether you're upgrading to a larger TV or already have a substantial screen, our wall mount is designed to accommodate your needs with ease and precision.



Technical Parameters:

40"-86"Full Motion Cantilever Mount for LED and LCD TVs		
Model:	YG85	Fit Screen Size: 40"-86"
Material:	Cold Rolled Steel	Colour: Black
Product Size:	W664*D500*H438 mm	Max Weight Capacity:45kgs
Cable Management:	Yes	Tilt: 0° to +5°
VESA Size:	200x200 to 600x400mm	Distance to the Wall: 55-502mm

Key Features:

Universal Compatibility: Compatible with a wide range of TV brands and sizes, our wall mount is versatile and adaptable to your needs.

Space-Saving Design: Say goodbye to bulky TV stands and reclaim valuable floor space. Our wall mount allows you to optimize your room layout and create a clean, minimalist aesthetic.

Adjustable Viewing Angles: Enjoy the perfect viewing angle from anywhere in the room. With its adjustable tilt and swivel features, you can customize the position of your TV for optimal comfort.

Easy Installation: Our wall mount comes with all the necessary hardware and a straightforward installation manual, making setup a breeze. No need to hire a professional - simply follow the step-by-step instructions and mount your TV securely in no time.

Sleek and Low-Profile: Designed to complement modern interiors, our wall mount features a sleek and low-profile design that seamlessly blends with any decor style.



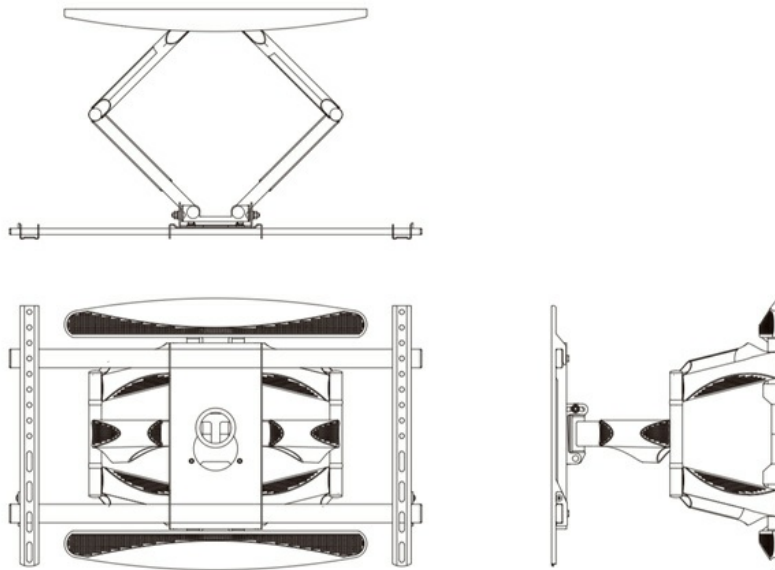
Color scheme



Specifications & features

	YG80	YG85
Max size	W664*D500*H438 mm	W664*D500*H438 mm
Adjustable range of vesa	200*200 - 400*600 mm	200*200 - 400*600 mm
Distance to the wall	55-500 mm	55-500 mm
Max loading capacity	45 KG	45 KG
Fit TV-PAD size suggestion	43"-85"	43"-85"
Colour	Black	Black
Others		

Line sketch



Applications:

Here are some common applications of TV Wall Mounts:

Living Room: In the living room, a TV Wall Mount can be used to create a sleek and modern entertainment area. Mounting the TV on the wall not only saves space but also enhances the viewing experience by providing an optimal angle for everyone in the room.

Bedroom: Mounting a TV on the wall in the bedroom is a popular choice for saving space and creating a cozy atmosphere. It allows for comfortable viewing from bed without the need for bulky furniture.

Home Theater: For a dedicated home theater room, TV Wall Mounts are essential for achieving that cinema-like experience. Mounting the TV on the wall ensures that everyone in the room has a clear view of the screen, enhancing the immersive experience.

Office: In a home office or workspace, a TV Wall Mount can serve multiple purposes. It can be used for presentations, video conferencing, or simply as a second monitor for increased productivity.

Gaming Room: For gamers, mounting the TV on the wall provides a clean and organized setup. It also allows for better visibility and immersion during gaming sessions, especially when paired with a gaming chair or sofa.

Commercial Spaces: TV Wall Mounts are also commonly used in commercial settings such as restaurants, bars, waiting

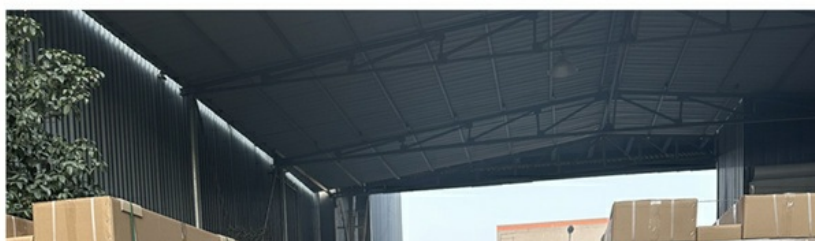
rooms, and retail stores. They can be used to display menus, promotional videos, product information, or entertainment for customers.





Package & Shipping:

Packing & Ship







Our Factory:

Wuxi Enjoy Electronic Technology Co.,Ltd. is a specialist manufacturer of AV peripheral integrated equipment. As one of the professional leaders in this industry with over 7 years of vast experience, we understood the needs of our customers and offer various selections of mounting systems from all kinds of flat panel display TV Mounts, including full motion mounts , desktop stand , TV ceiling mounts , digital signage mounts and Video wall mount systems . Our design and engineering capabilities are extensive. All products include our renowned, easy-to-read illustrated manual guides, for fast assembly and installation. Our team focused on products functions, safety, installation requirement, quality and aesthetic. Since established, Our company has fast developed to one of the professional market leaders throughout most of Asian market, North America, Europe etc., Enjoy strives to deliver the best mounts to meet your needs. We have been dedicated to provide you with the most comprehensive line of mounts, accessories and display solutions. Our ultimate focus is to provide the solutions and supports that necessary to help your business growing.

Wuxi Enjoy Electronic Technology Co.Ltd.is a focus on brand display rack development design and custom production of high-tech enterprises,enterprises through the ISO9000 and environmental 14000 certification.Company research and development design center is located in Wuxi and technology square a beautiful environment,production manufacturing center is located in Jiangsu Danyang Xiaoliang innovation industrial park, the transportation is convenient, the factory covers an area of 20000 square meters, has a full set of CNC sheet metal production, electrostatic spray line, intelligent assembly workshop, carpentry workshop, art workshop, cartons workshop, and spacious shipment packing workshop.

With customer demand as the center, research and development design as the guidance, and the purpose of "Power You Barad", Enjoy is committed to providing customers with one-on-one high-end customization and one-stop production capabilities, and has formed its own unique comprehensive competitive advantages in the fierce market competition.

Better service, better products, better reputation. Enjoy Display show in the field of tools hardware display shelf carpet on the floor display field, the customer has been throughout Europe and the United States, Australia, Middle East and Southeast Asia and other global markets, become the numerous well-known brands reliable long-term partner.



FAQ

Q: Are you factory or trading company?

A: We have developed own factory and Imp. & Exp. company to perfect our service.

Q: Do you offer OEM&ODM service?

A: Yes, OEM&ODM service are warmly welcome when your quantity is large, we have our own R&D dept. which can help for the project.

Q: Do you provide samples? Is it free?

A: We provide the samples, but please pay the sample cost and express fee.

Q: Do you accept small order?

A: Yes, small order is available.

Q: What is the term of payment?

A: Online trade assurance orders first. We also accept T/T, L/C at sight and other payment terms.

Q: How do you ensure the quality control.

A: We'll inspect every process when mass production, and test the sample before packing.

Q: What should I do if we receive the bad products.

A: We'll inspect the products one by one before packing.

Pls send the photos of bad products to us, we'll re-contact for you once we confirm the bad quality is caused by us.

ENJOY Wuxi Enjoy Electronic Technology Co.,LTD

+8613921312004 anna@enjoy-visions.com enjoy-visions.com

Yuanqiao Road, Yixing Economic Development Zone, Jiangsu Province, China.